
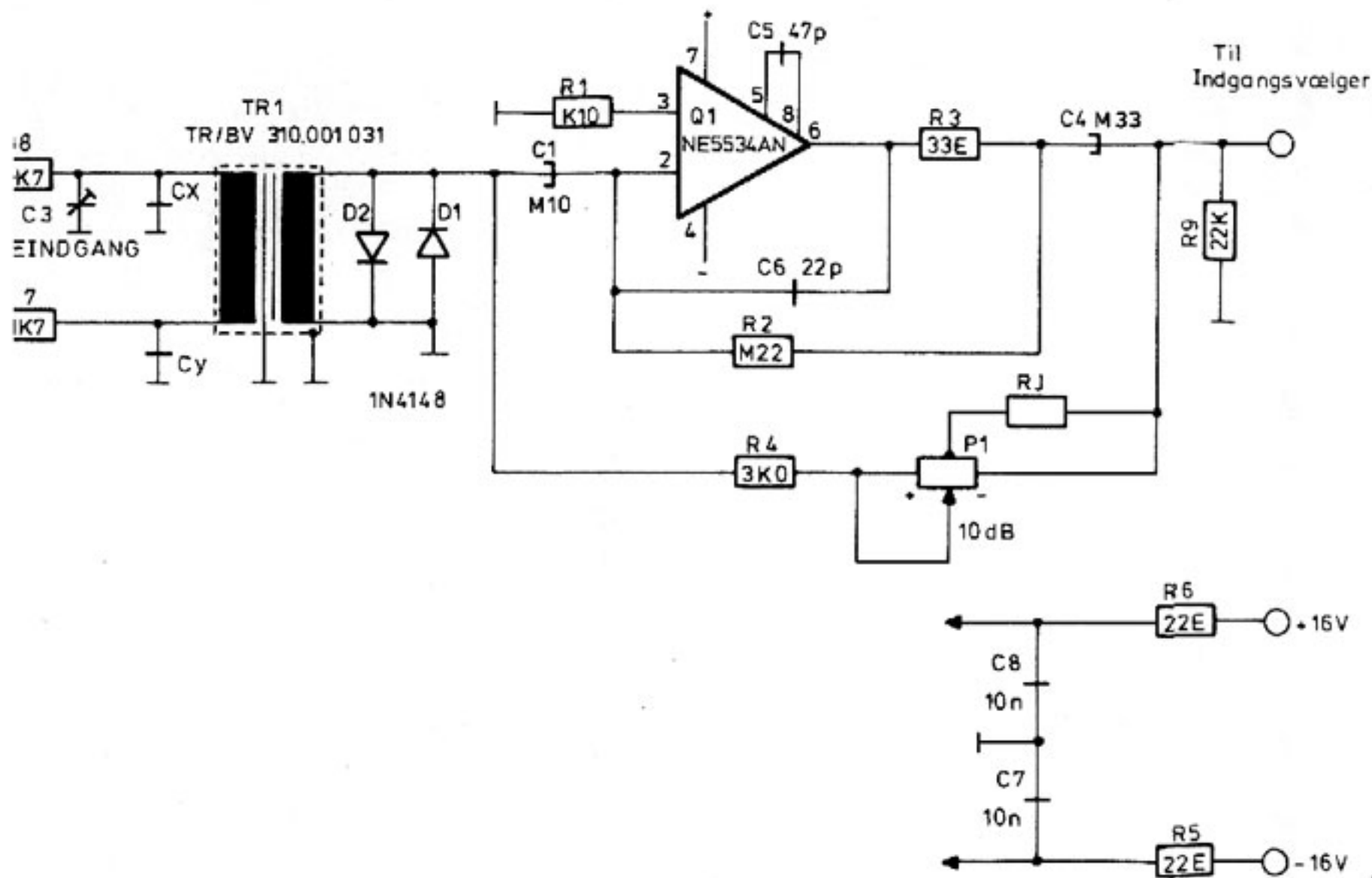


		HØJ OG LAVPAS		Konstr.	
				Tegn.	UDE nov 8
				Godk.	<i>[Signature]</i>
		 ELEKTROAKUSTIK as		Tegning nr.:	82 09 03 81
Målestol:					
Materiali:					



KOMP + 10

RJ FORST. 0dB.

RL ~ 2K Ω

ZI ~ 10K Ω

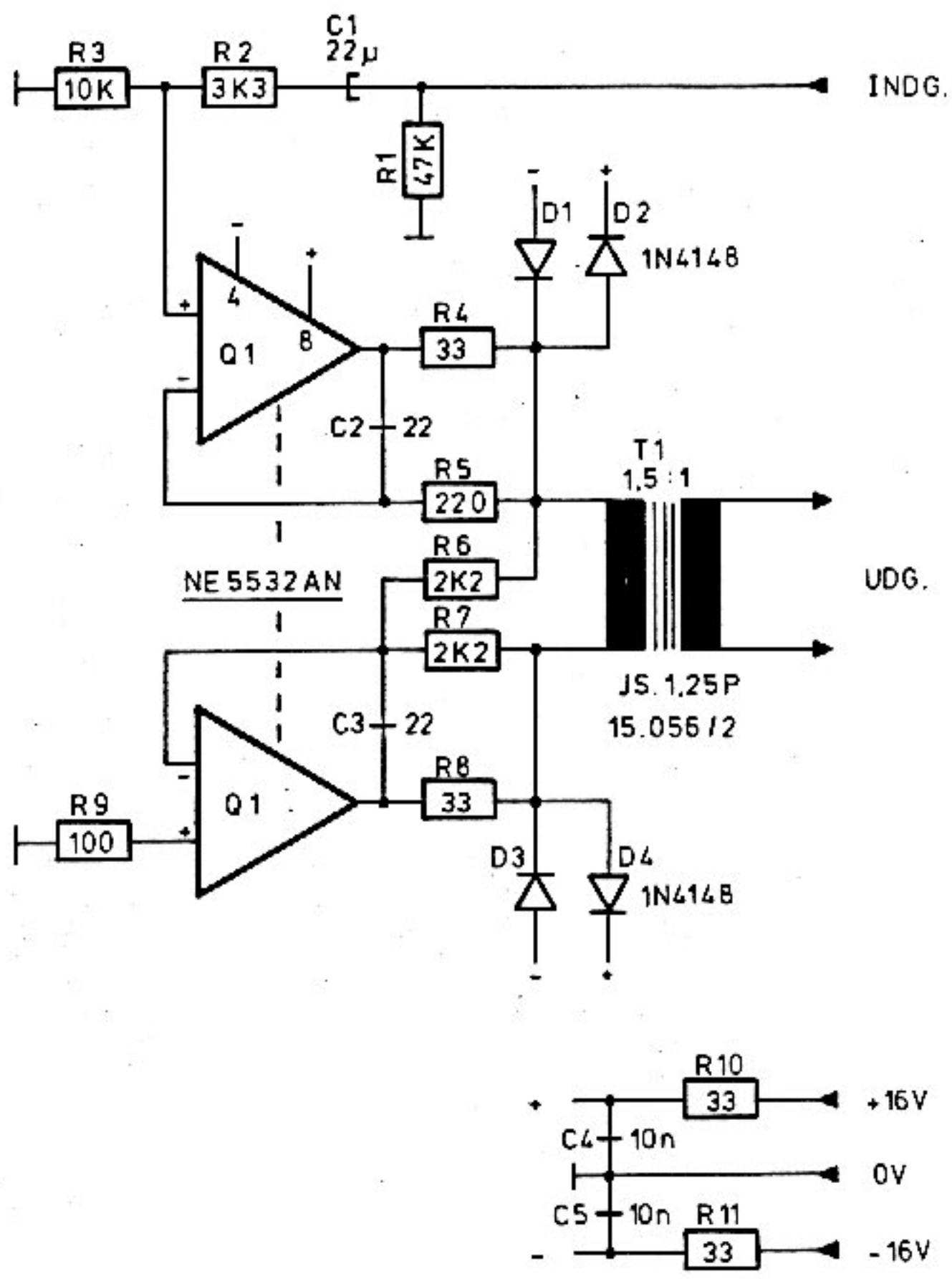
MAX INP + 21dBm

STØJ, RG = 600 Ω OG A = 0dB.

dB CLIR

KLIR VED INP	+ 9	+ 21dBm
40 Hz	0.07	0.1
120 Hz	0.02	0.02
1 KHz	< 0.02	< 0.02
5 KHz	< 0.02	< 0.02
15 KHz	< 0.02	< 0.02

Målestok Materiale:	LINE INDG FORST	Konstr UDF sep 82
	ELEKTROAKUSTIKas	Godk. Tegning nr 82 08 04 62



Nr. 864

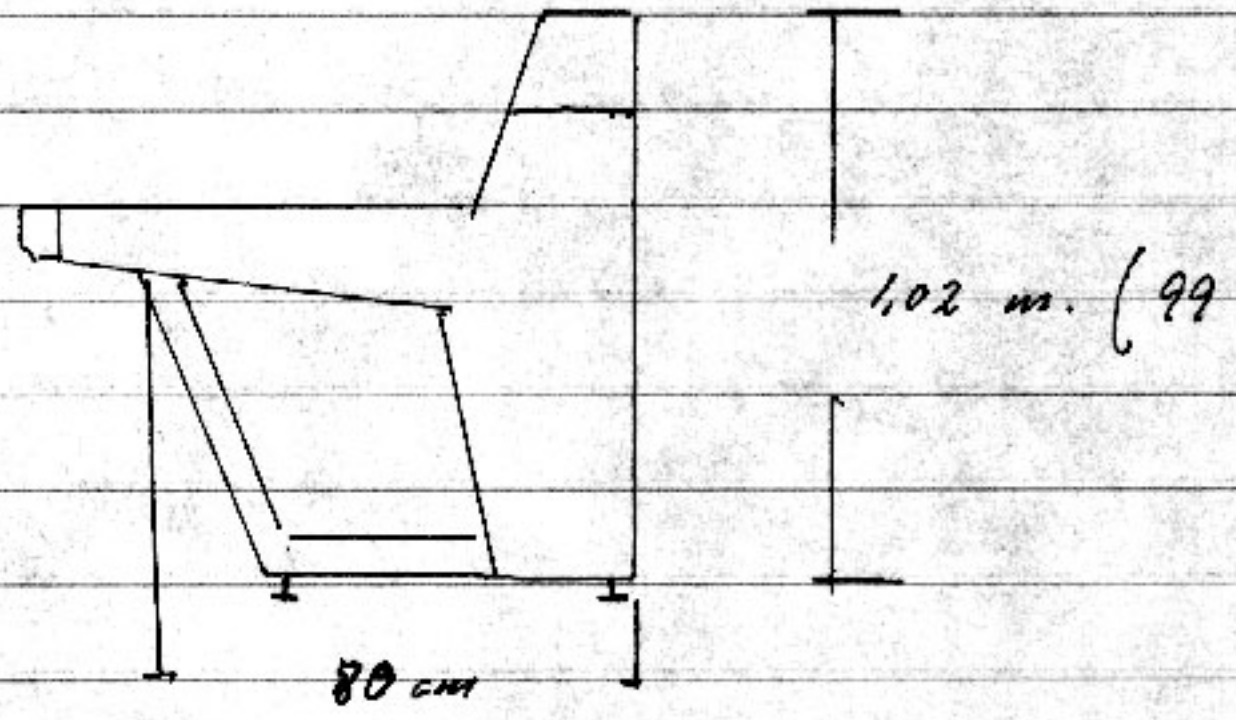
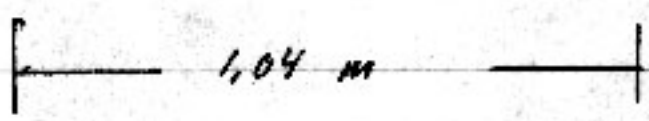
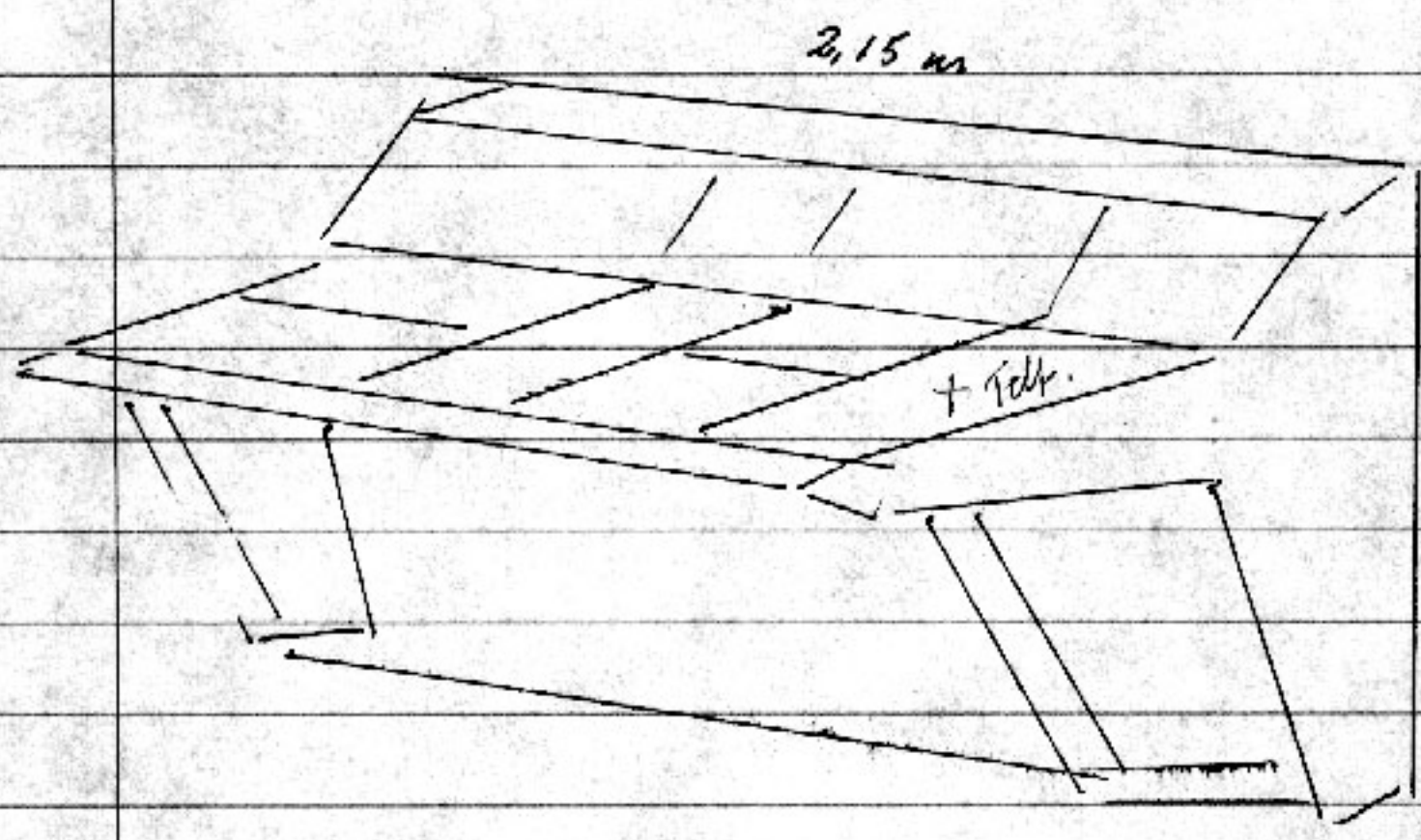
Målestok:
Materiale:

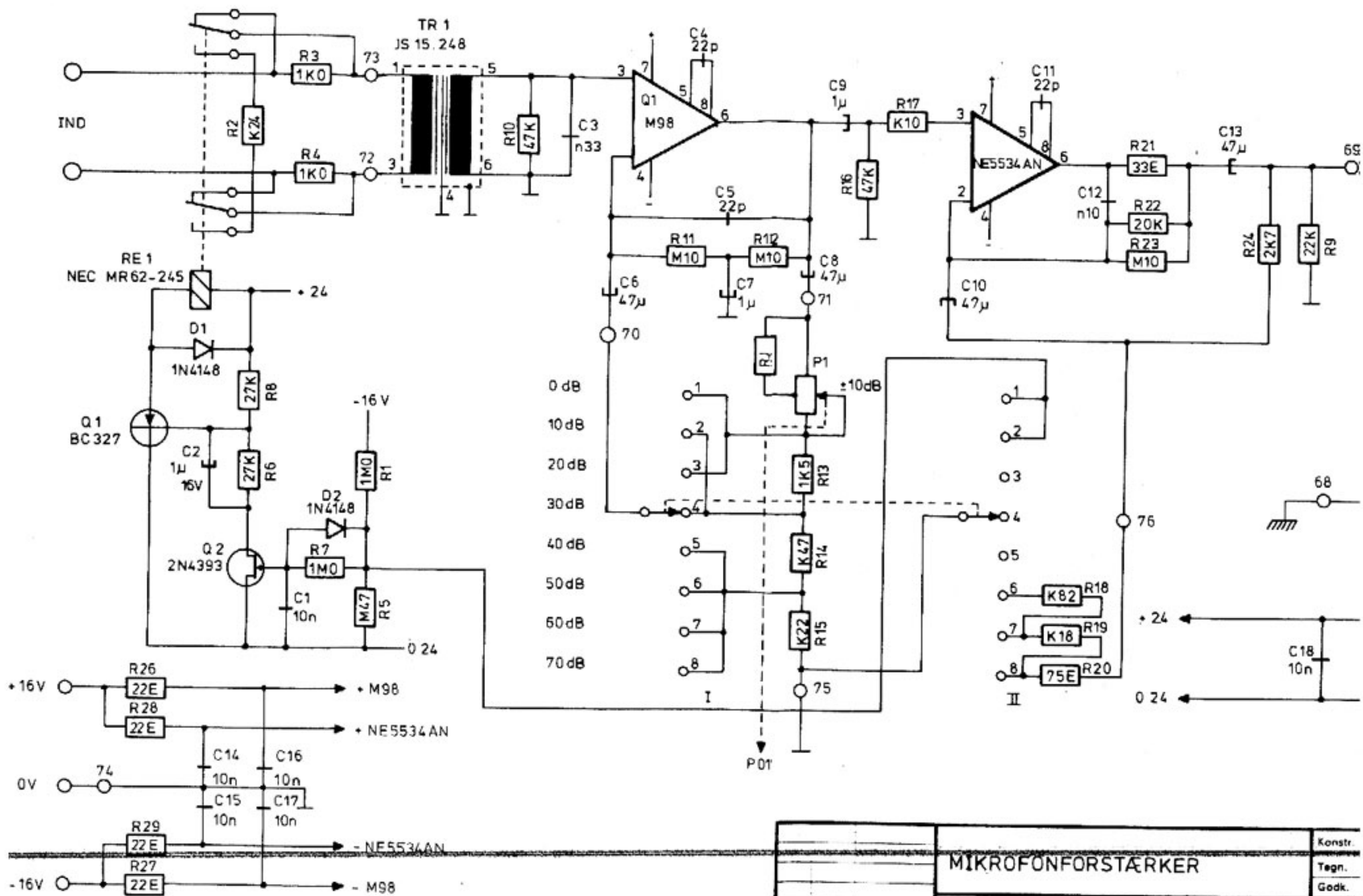
LINIE UDG. FORSTÆRKER

np ELEKTROAKUSTIK as

Konstr	
Tegn.	UDE
Godk.	<i>[Signature]</i>
Tegning nr.:	82 11 17

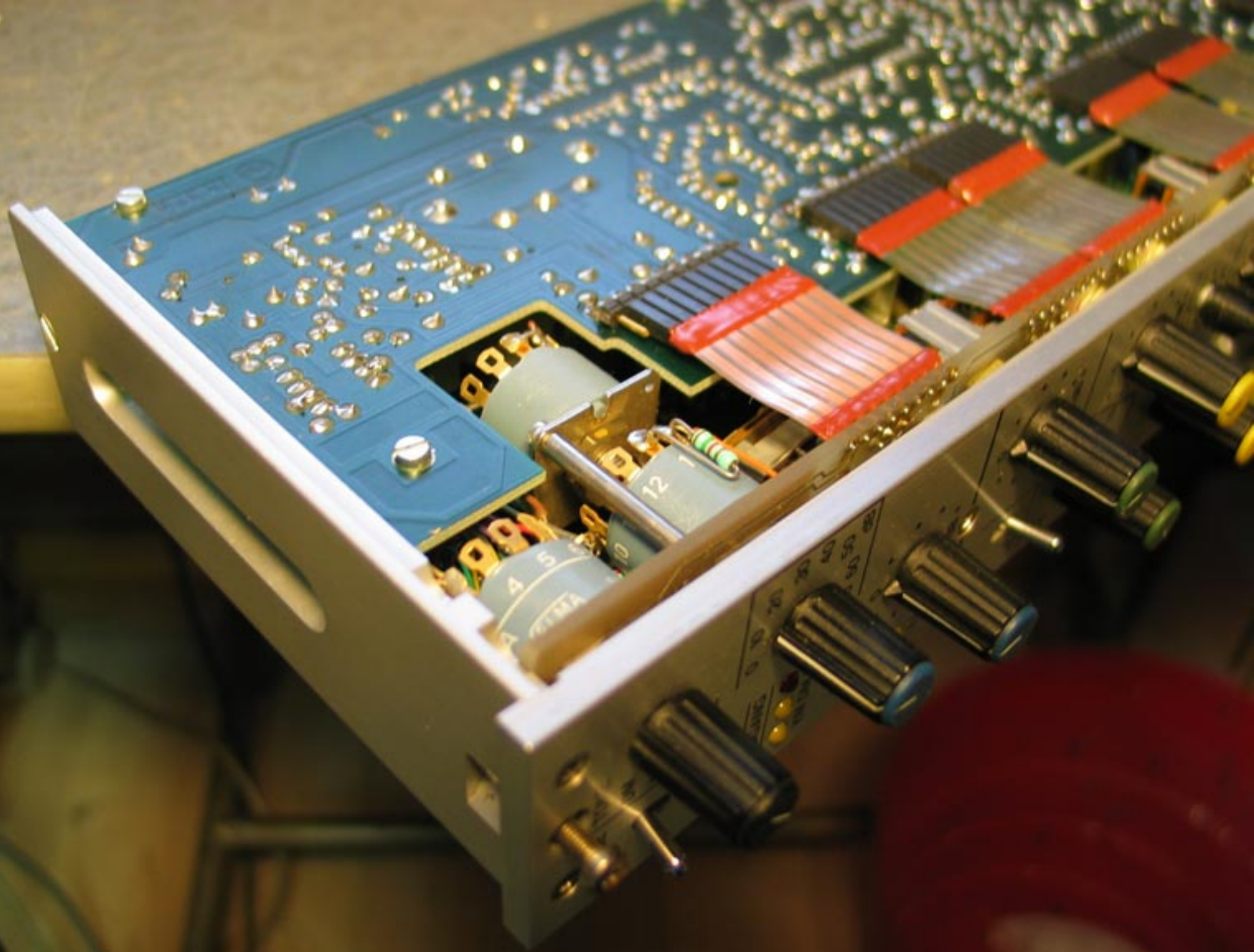
NP - ODIN PULT . 32-24-4-2.





0 dB
10 dB
20 dB
30 dB
40 dB
50 dB
60 dB
70 dB

		Konstr.
MIKROFONFORSTÆRKER		Tegn.
		Godk.
		Tegning
Målestok:	np ELEKTROAKUSTIK as	82
Materialer:		





FASE/TONE

DM

1800 CYCLE

0 10 20 30 40 50 60 dB

INDGANG

KM DM T

APP

LI

0

dB+

6

0

dB+

15

0

dB-

0

dB-

0

dB-

0

dB-

0

dB-

0

dB-

0

dB-

0

dB-



GRP
3/4

GRP
1/2

5 6 7 8 9 10

TAP 1

FP- UD EP-

2 1 0

5 6 7 8 9 10

TAP 2

FP- UD EP-

2 1 0

5 6 7 8 9 10

TAP 3

FP- UD EP-

2 1 0

5 6 7 8 9 10

TAP 4

FP- UD EP-

2 1 0

5 6 7 8 9 10

TAP 5

FP- UD EP-

2 1 0

5 6 7 8 9 10

TAP 6

FP- UD EP-

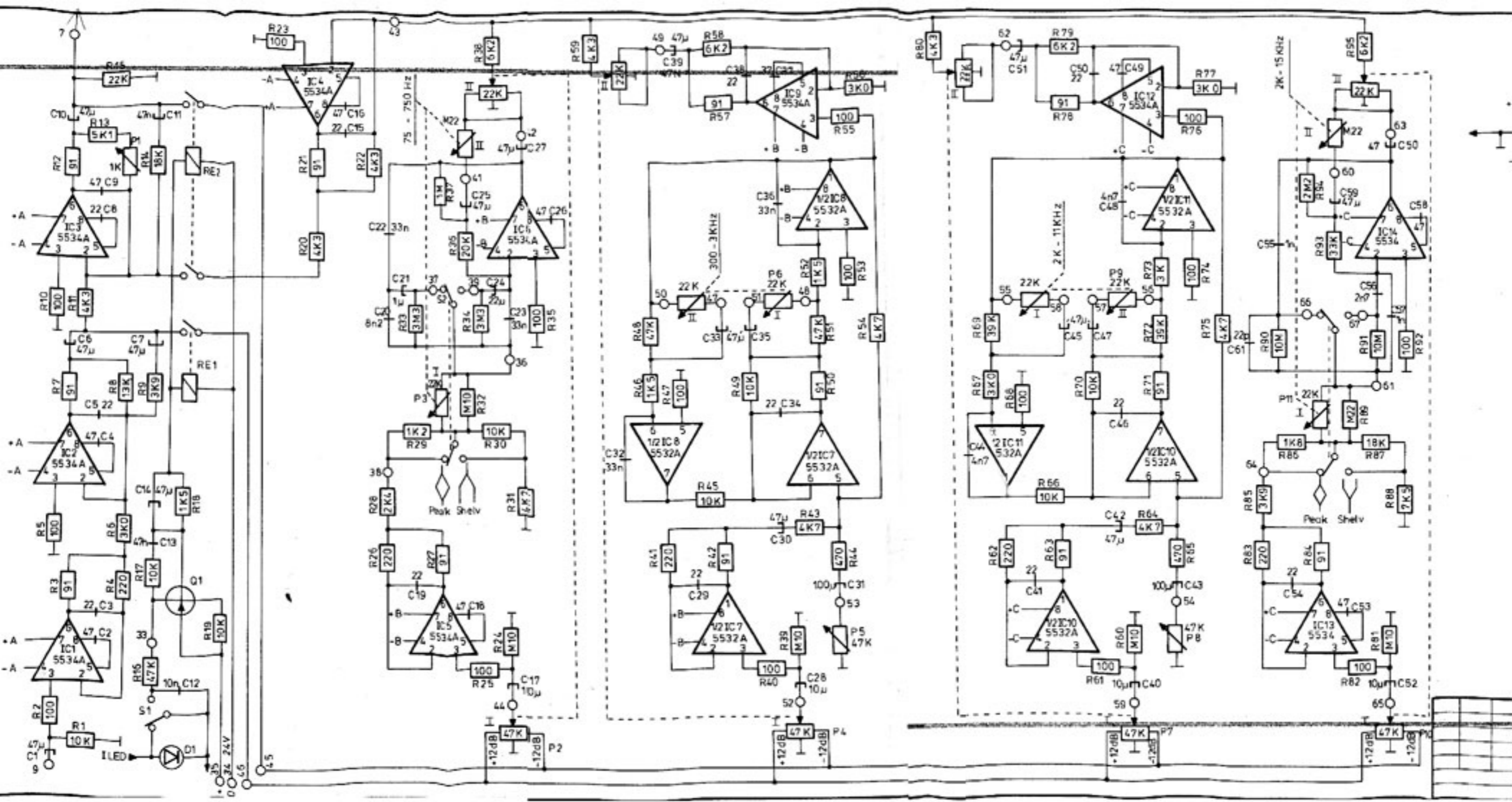
2 1 0

4 5 6 7 8 9 10

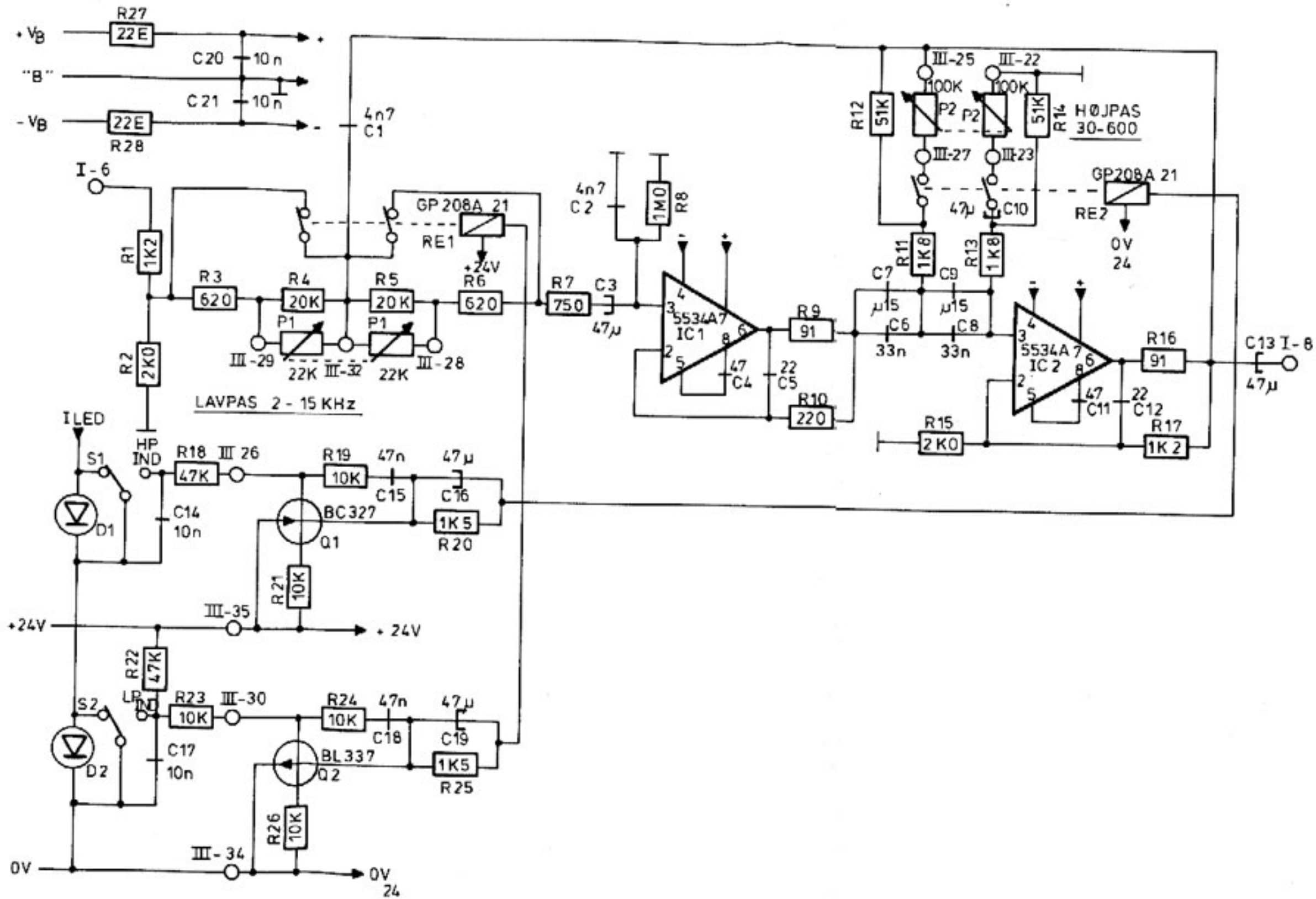
FP- UD EP-

3 2 1 0







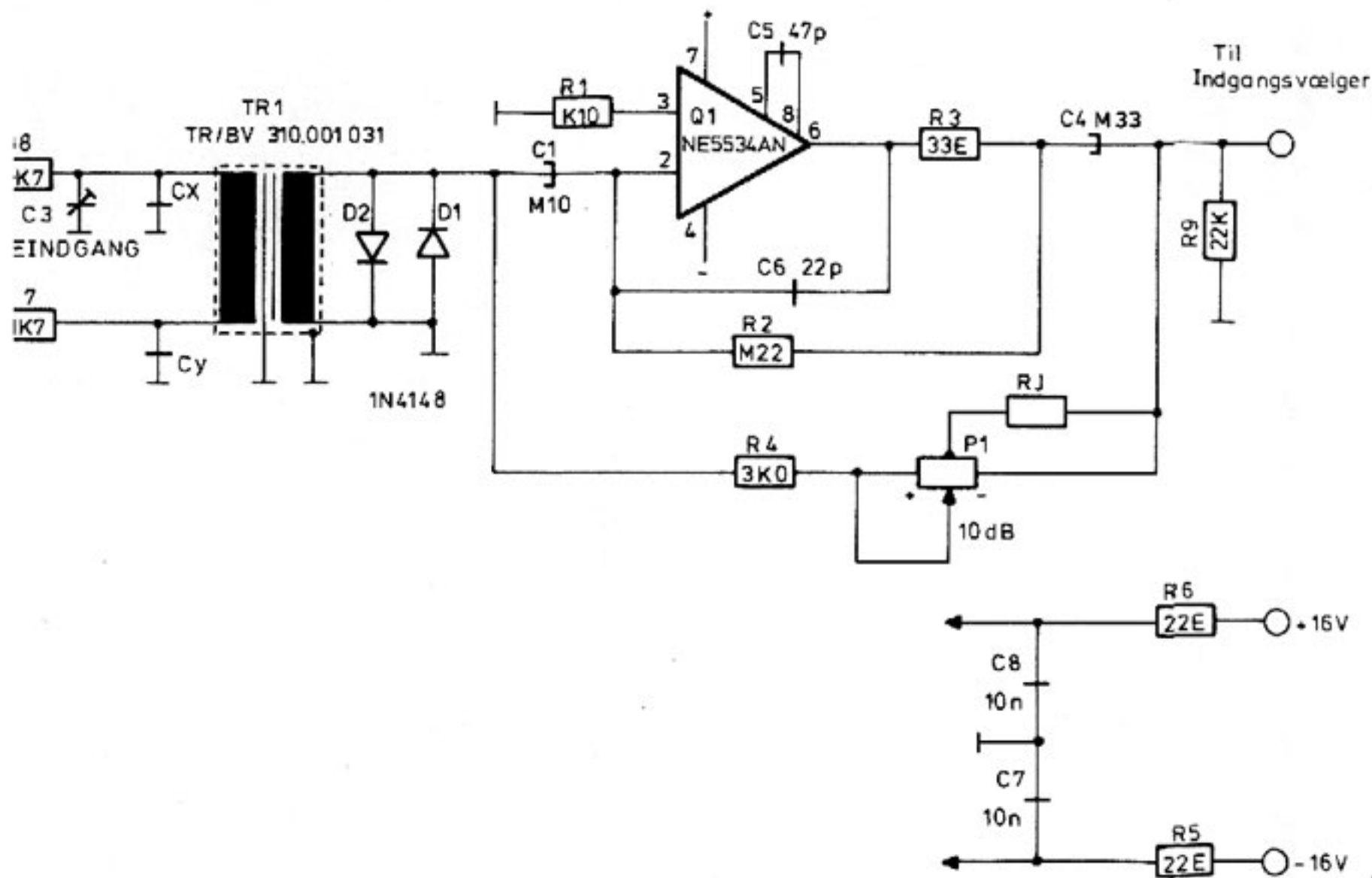


Målestol:	
Materiall:	

HØJ OG LAVPAS

np ELEKTROAKUSTIK as

Konstr.	
Tegn.	UDE nov 8
Godk.	<i>[Signature]</i>
Tegning nr.:	82 09 03 81



KOMP + 10

RJ FORST. 0dB.

RL ~ 2K Ω

ZI ~ 10K Ω

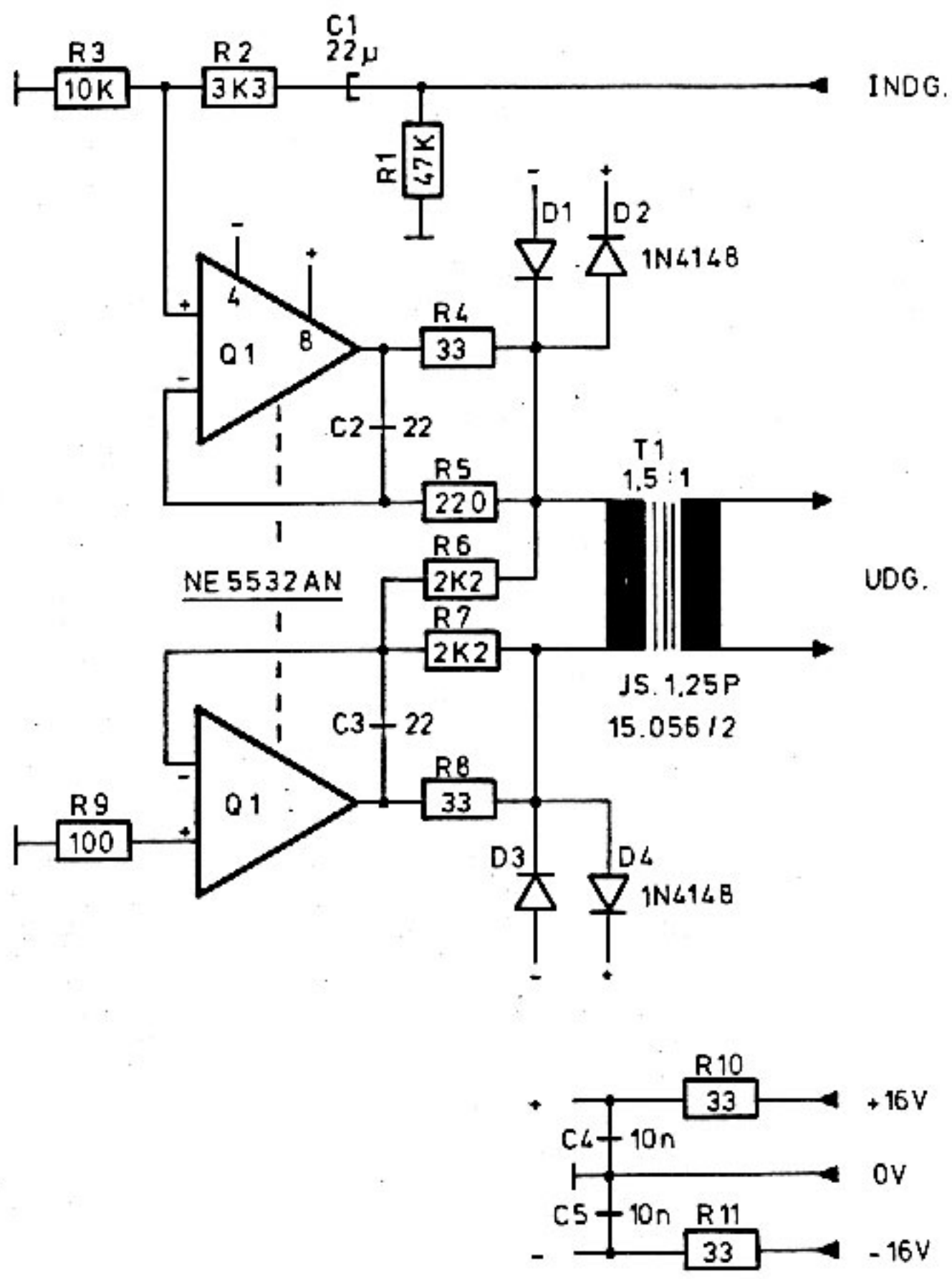
MAX INP + 21dBm

STØJ, RG = 600 Ω OG A = 0dB.

dB CLIR

KLIR VED INP	+ 9	+ 21dBm
40 Hz	0.07	0.1
120 Hz	0.02	0.02
1 KHz	< 0.02	< 0.02
5 KHz	< 0.02	< 0.02
15 KHz	< 0.02	< 0.02

Målestok Materiale:	LINE INDG FORST	Konstr UDF sep 82
	ELEKTROAKUSTIKas	Godk. Tegning nr 82 08 04 62



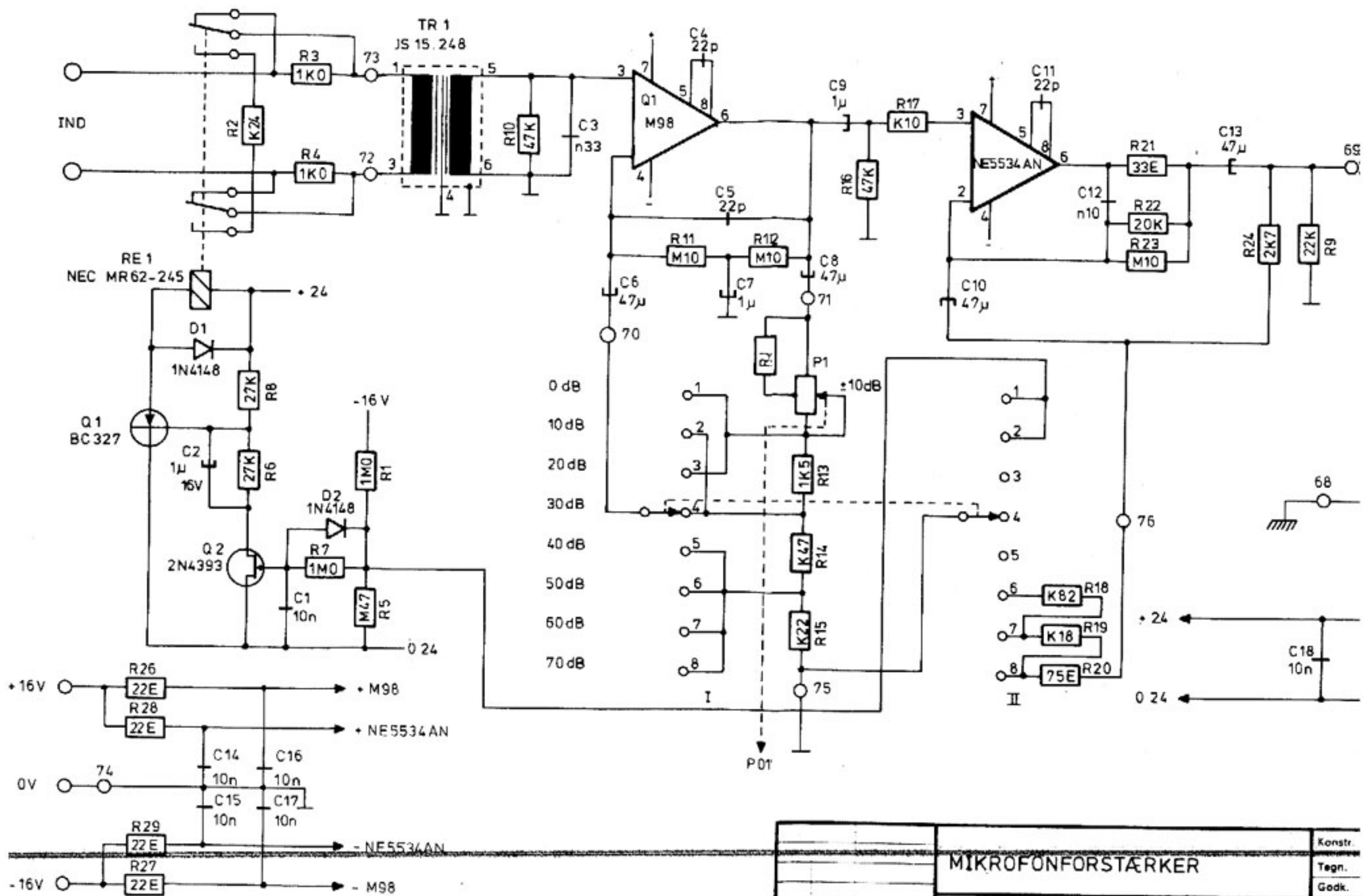
Nr. 864

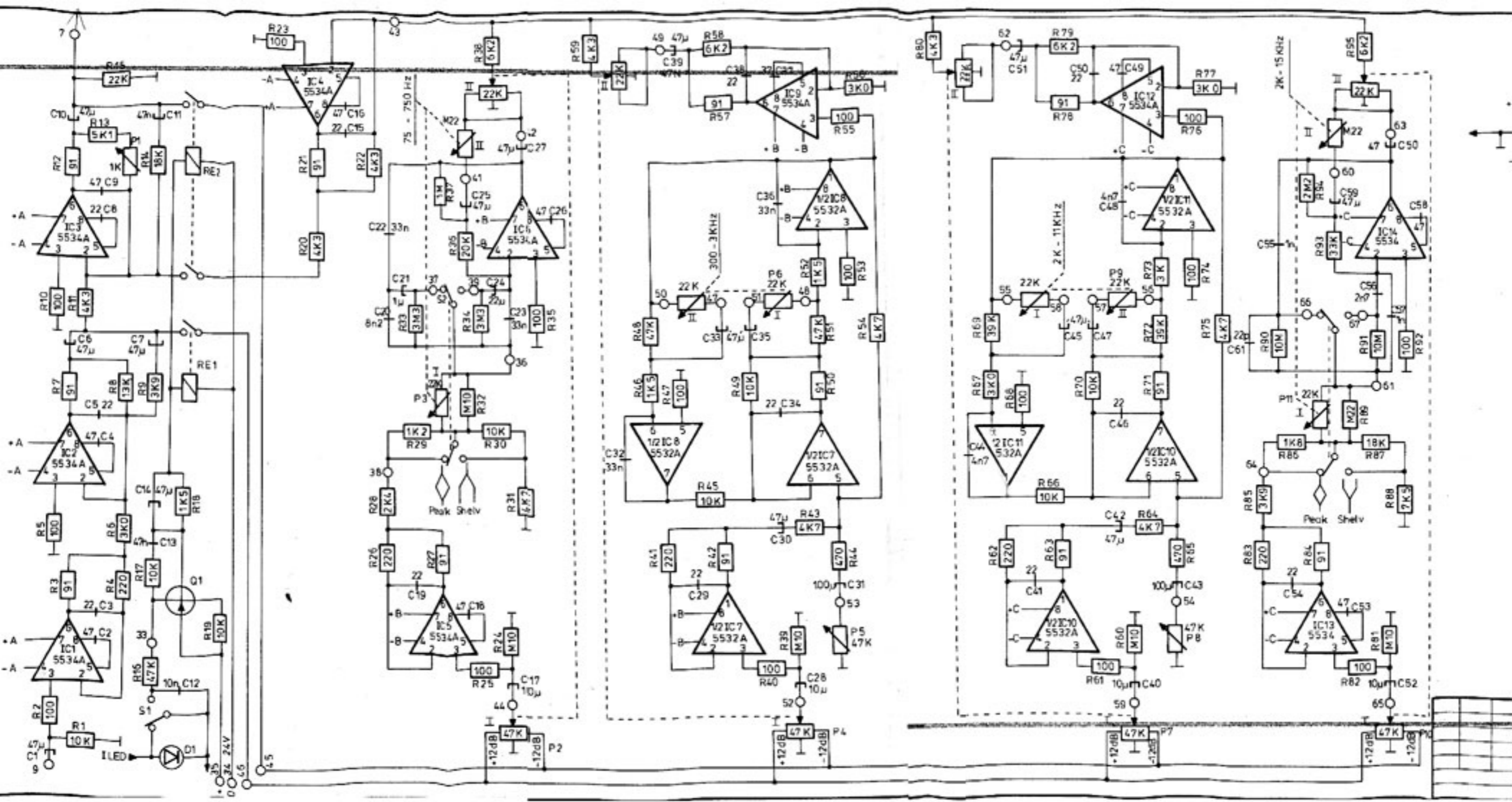
Målestok:
Materiale:

LINIE UDG. FORSTÆRKER

np ELEKTROAKUSTIK as

Konstr	
Tegn.	UDE
Godk.	<i>[Signature]</i>
Tegning nr.:	82 11 17





Np Odin 10 kanals monteringsvejledning

Main module eq etc.

print connector stik 1 (tættest på panknap) print connector stik 2 (længst væk fra panknap)

Stik 1

ben 1 forbindes til ben 24 (fader funktion)

ben 2 forbindes til ben 23 (stel forbindelse)

ben 10 forbindes via modstand på 30 kohm til + 24 volt (solo aktiv)

ben 12 brydes (bus for solo ind lytning)

ben 25 forbindes via LED (overload) til + 16 volt

Stik 2

ben 1 forbindes til jack line in +

ben 2 forbindes til jack line in -

ben 09 = +16 volt

ben 10 = - 16 volt

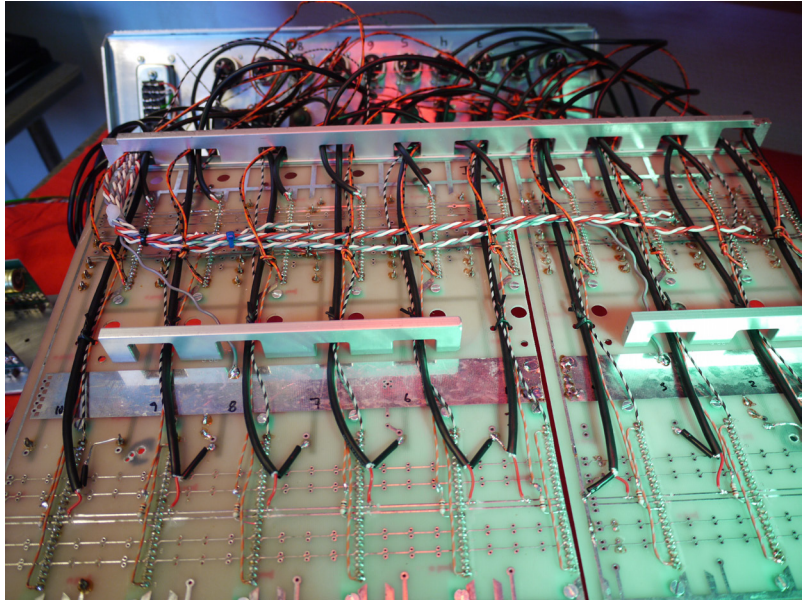
ben 15 = 0 volt (24 volt)

ben 16 = +24 volt

ben 23 = +48 volt

ben 24 forbindes til xlr mic in +

ben 25 forbindes til xlr mic in -



LF 10 balanceret udgang - 5 kanalers modul

A02a og c = chassis

A10c = + 16 volt

A12c = - 16 volt

A04c / A20c / B02c / B14c / B28c = 0 volt

in 1 = A04a

in 2 = A20a

in 3 = B02a

in 4 = B14a

in 5 = B28a

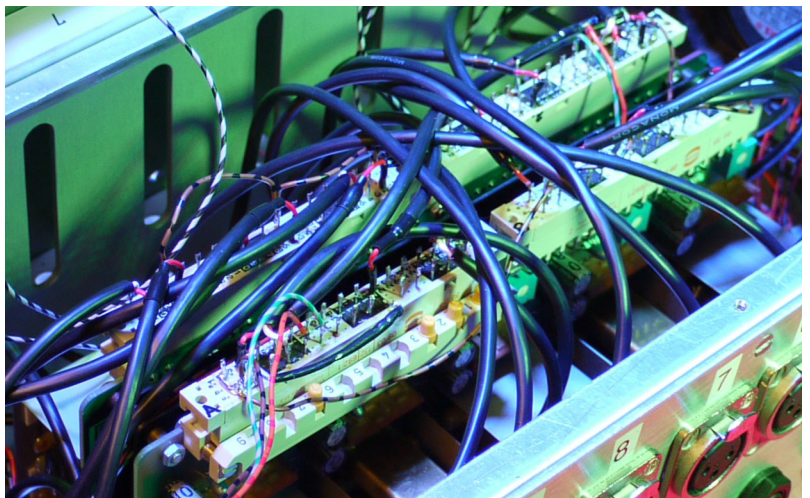
ud 1 = A08a / A08c

ud 2 = A28a / A28c

ud 3 = B06a / AB06c

ud 1 = B20a / B20c

ud 1 = B32a / B32c



Powersupply (Tuchel 30 polet multistik)

ben 01 a+b+c = +16 volt

ben 02 a+b+c = -16 volt

ben 03 a+b+c = 0 volt (+/-16 volt)

ben 04 a+b+c = +24 volt

ben 05 a+b+c = 0 volt (+ 24 volt)

ben 06 a+b+c = + 48 volt

ben 07 a+b+c = 0 volt (+48 volt)

ben 10 a / c = 220 volt

